

artist member digital image specifications

Do you have questions? Call us at 303.388.7420
or email support@artworknetwork.com.

These are the basic image specifications for artwork to be uploaded to the Artwork Network site. If you are unfamiliar with resizing images, please send us a quality image (nothing too small in dimensions) and we can resize them for you!

IMAGE SPECIFICATIONS:

REQUIRED:

Main Image - Full image with no matting or frame

- Size must be AT LEAST 600 pixels on the longest side
- Image resolution of 72 ppi (web resolution)
- Save as titleofwork600.jpg (ex: sunrise600.jpg)
- To maintain consistency within our site, please do not 'write' any image details directly onto the digital images.



OPTIONAL, but VERY helpful for selling your work online, sight-unseen:

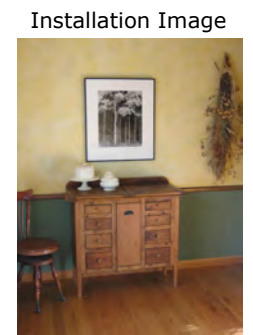
Framed image (if applicable) - Full image with frame

- Size must be AT LEAST 600 pixels on the longest side
- Image resolution of 72 ppi (web resolution)
- Save as titleofwork_framed600.jpg (ex: sunrise_framed600.jpg)
- To maintain consistency within our site, please do not 'write' any image details directly onto the digital images.



Installation image - Shown in context

- This is a photograph of your artwork shown in context of a room or piece of furniture to illustrate scale.
- Size must be AT LEAST 600 pixels on the longest side
- Image resolution of 72 ppi (web resolution)
- Save as titleofwork_framed600.jpg (ex: sunrise_framed600.jpg)
- To maintain consistency within our site, please do not 'write' any image details directly onto the digital images.



IMPORTANT NOTE:

Please invest in professional photography! It will make all the difference in presenting work on the web.

We do not accept images that are:

- Blurry
- Inaccurate representation of the actual piece (For example: wrong colors, wrong contrast, reflections, shadows across art, distortion, etc.)